

WASHINGTON STATE HEALTHCARE SAFETY COUNCIL



❖ **Friday, October 29, 2010 from 0900 – 1200**

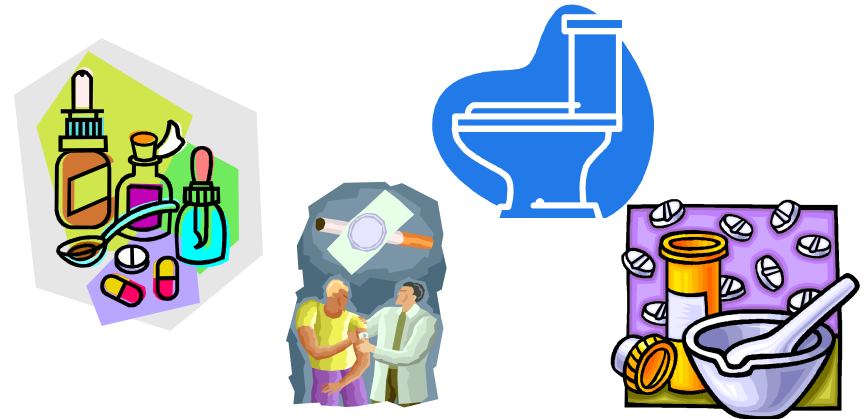
Videoconference between:

- ❖ **Providence Everett – Pacific Campus – Conference Room Prov B**
Providence St. Peter's - Olympia - Medical Staff Conference Room
Providence St. Mary's - Walla Walla – The Marion Conference Room
Sacred Heart - Spokane – Mary Bede Conference Room
Providence Health and Services Corporate Offices – Renton – 1801 Lind Ave. SW 98057 – Sun Valley Conference Room
- Alan Jones, PhD
Hospital Waste Management
- Joyce Lindell, RPh,
Providence Everett Medical Center
- *Larry Ishii, RPh*
St. Joseph Hospital, Bellingham (still to be confirmed)
- Shirley Tinsley, RPh
Jefferson Healthcare, Port Townsend
- ❖ **Objectives:**
 - 1) **Discuss current standards related to pharmaceutical waste.**
 - 2) **Discuss strategies for complying with pharmaceutical waste.**
 - 3) **Share resources to achieve and sustain compliance.**
 - 4) **Network with peers.**

2010 Award and Recognition

Please take the time to nominate someone and/or your safety program for the Lew Brown Memorial and the Elaine Carty Performance Improvement Awards!

Pharmaceutical Waste



Directions to each facility can be found at;

Providence.org ---Click on the facility you wish to attend

Free to WSHSC members- or \$25.00 for nonmembers.

Membership information can be obtained from **www.healthcaresafety.org**

RSVP for the site you plan to attend with
Marianne.Klaas@swedish.org
or at (206) 386-2549 for further information.